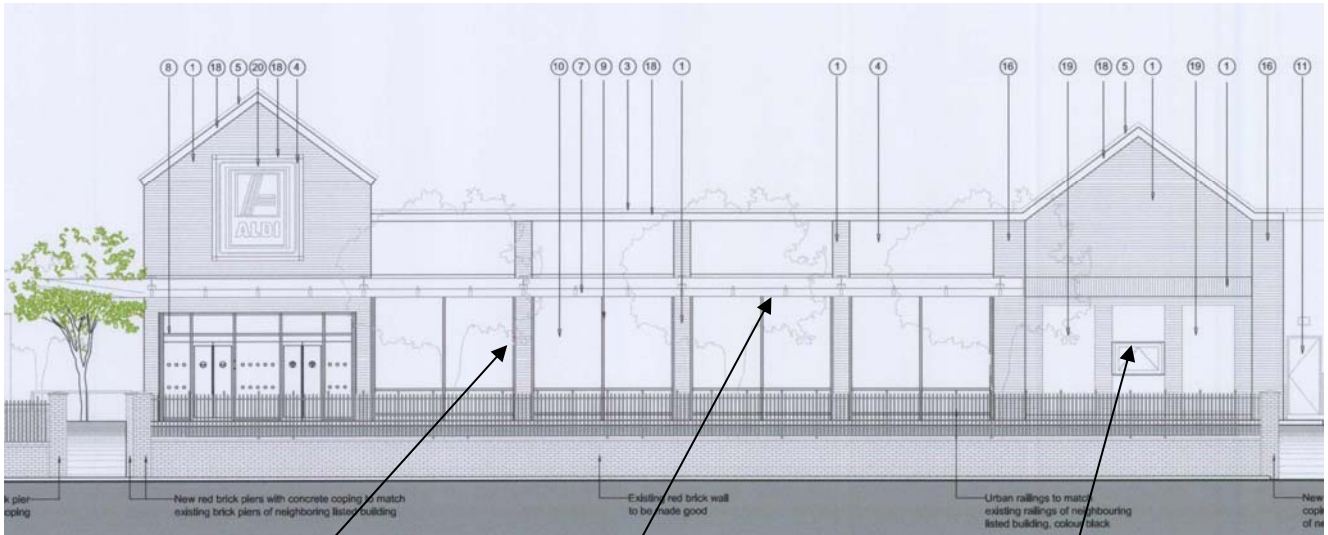


Elevation as previously approved under 09/1057/FUL showing notable areas of change to scheme now being proposed

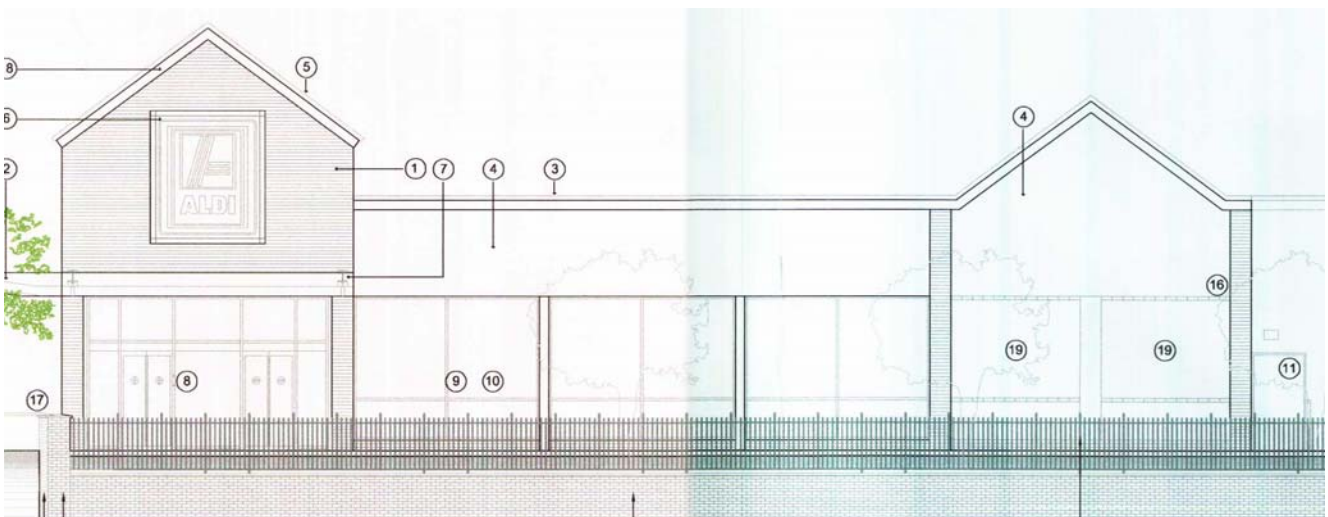


LOSS OF BRICK PILLARS

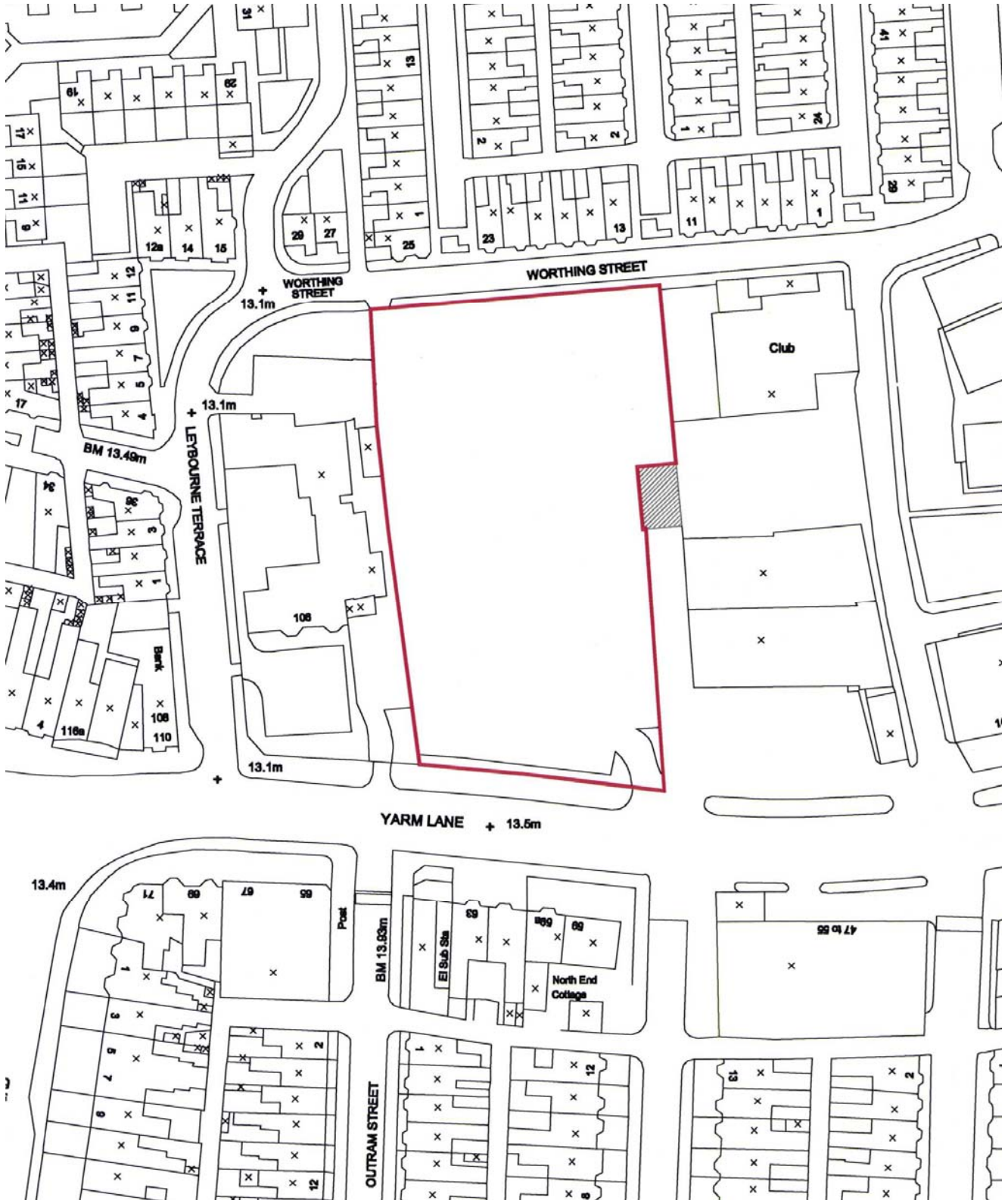
LOSS OF CANOPY

LOSS OF FEATURE DETAILING

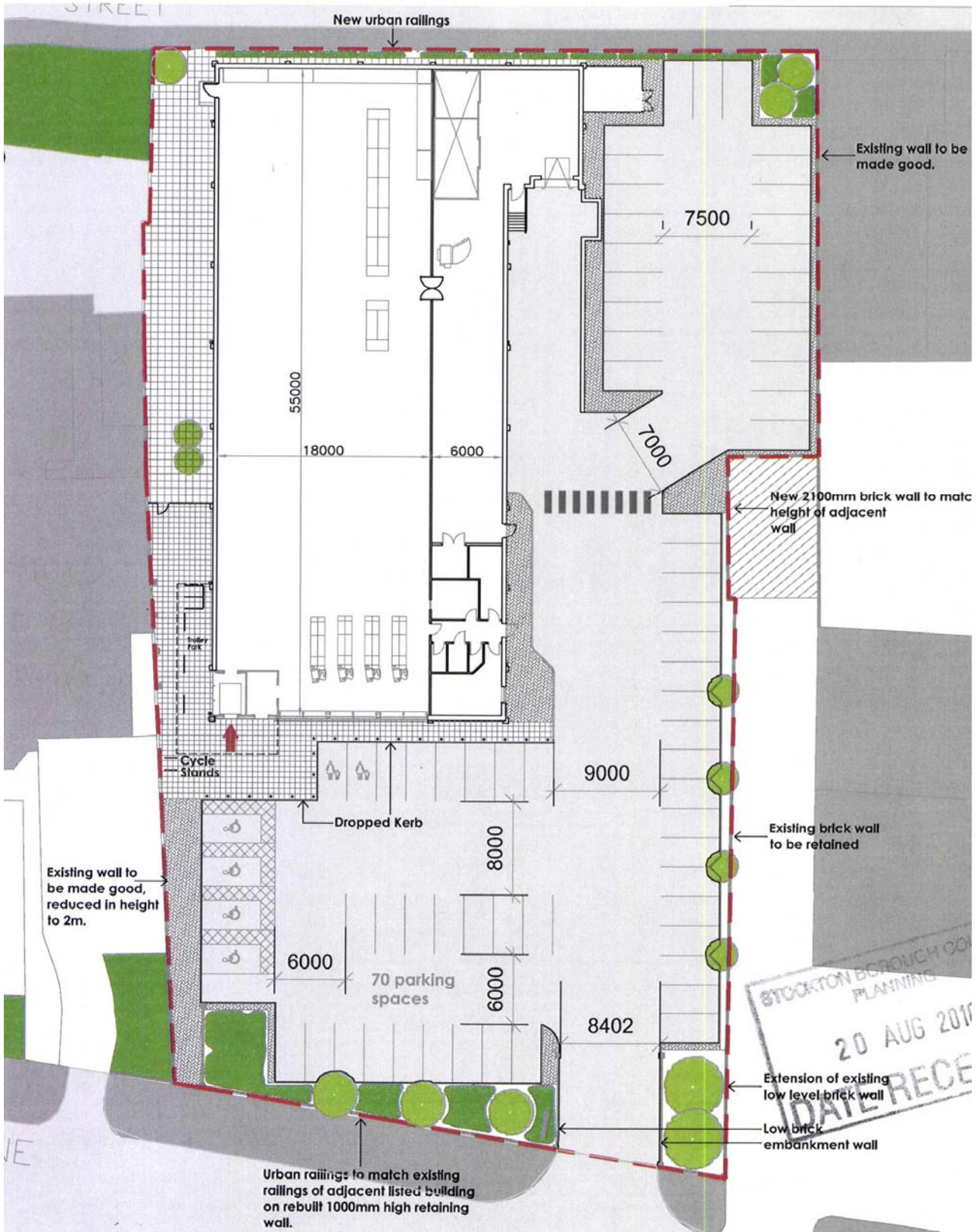
Notable changes from approved elevation to proposed elevation



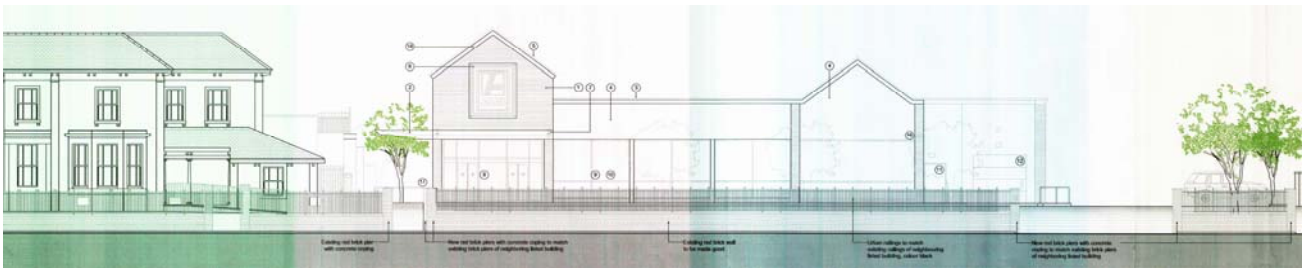
10/2202/VARY – Proposed Food Store
104 Yarm Lane Stockton on Tees
Appendix reference 2
Submission details for 10/2202/VARY – Location Plan



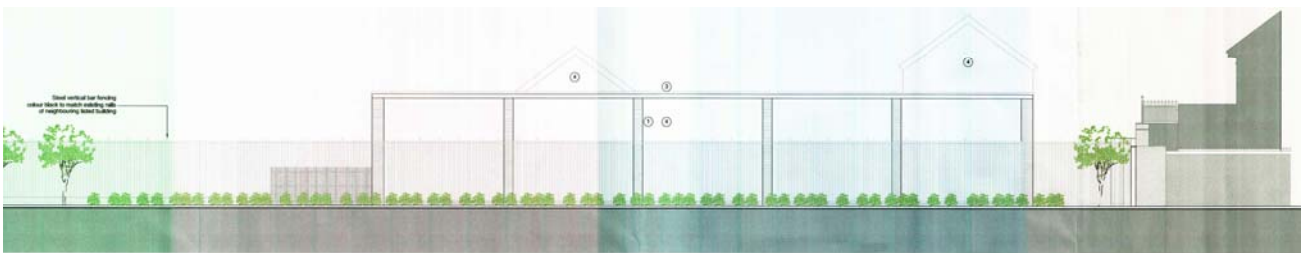
Submission details for 10/2202/VARY – Site Layout



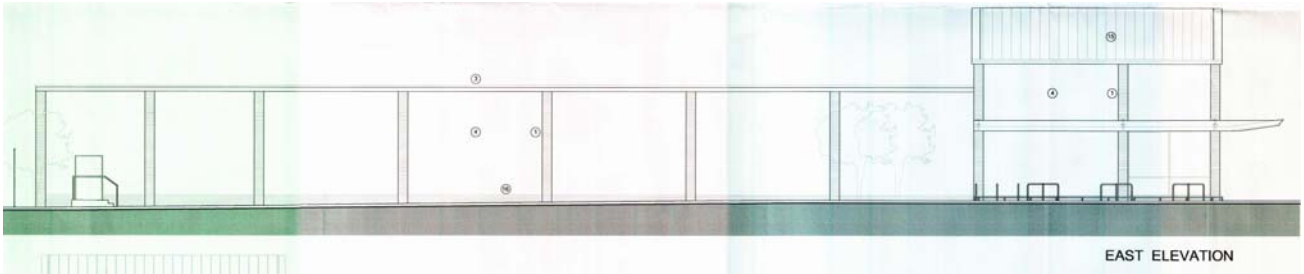
Front Elevation



Rear Elevation



North side elevation



South side elevation

